



BYD Battery-Box Premium LVS Lite Service Guideline and Checklist Version 1.1

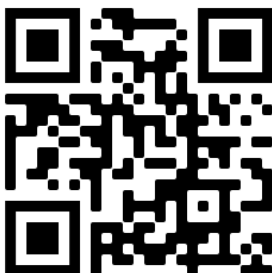
Valid for Premium LVS Lite 4.0 / 8.0 / 12.0 / 16.0



LVS Lite 16.0 (4 Modules + PDU)



BMU (1 x per System)



Make sure to always use the latest version of this service document,
available at: www.bydbatterybox.com

Important: The installation and all other kinds of works or measurements in combination with the Battery-Box Premium are only allowed by professional and qualified electricians.

This checklist is a shortened assistance for the Battery-Box and does not replace the original manual, which can be found on www.bydbatterybox.com / www.alpspower.com.au.

Subject to technical modifications no responsibility is accepted for the accuracy of this information.

Attention: Improper handling can cause danger and damage.

CONTENT

CONTENT	2
1. GENERAL STEPS	3
2. ERROR ANALYSIS	4
2.1 BMU does not turn on / BMU LED is off or flickering abnormally	4
2.2 Modules do not show any reaction / No LED on module	4
2.3 Problem with the Firmware Update / App Configuration / Battery WiFi	5
2.4 Incorrect output voltage / No BMS Data / BMU EC102	6
2.5 Communication issue with Inverter / BMU EC106	7
2.6 SOC & charging logic	7
2.7 Unexpected shutdown	7
2.8 BMU/BMS LED Event Code (EC)	8
2.9 Be Connect Plus (BCP)	10
2.10 Voltage measurement and undervoltage	11
2.11 Module Exclusion Method (Identifying a faulty module)	12
3. SERVICE TASKS	13
3.1 BMU Replacement	13
3.2 PDU Replacement	13
3.3 LVS Lite Module Replacement	13
SERVICE CHECKLIST AND CONTACT INFORMATION	14

1. GENERAL STEPS

Make sure to always use the latest version of this service document, available at: www.bydbatterybox.com

Please proceed first with the installation steps by:

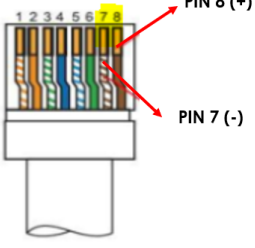
No.	Name	Description
1	Configuration	Check if the configuration is correct. Refer to latest "BYD Battery-Box Premium LVS Lite minimum Configuration List" (V1.0 or above) available at: www.bydbatterybox.com Make sure the inverter is configured correctly.
2	Correct external cabling	<ol style="list-style-type: none"> 1. Communication to inverter <ol style="list-style-type: none"> a. Depending on the choice of inverter the cable between the BMU port and the inverter must be specially made. Please check the specifications in the installation manual. b. Recommended CAT5 or higher; c. Check the cables and replace them if necessary 2. Grounding <ol style="list-style-type: none"> a. Battery-Box connected directly to the ground-bus of the house. b. The battery must not be earthed via the inverter! Otherwise, communication problems are possible. 3. Ethernet-Cable for Internet (strongly recommended!) 4. Correct parallel connection cabling if applicable 5. DC-Ports - Make sure that + and - are properly connected. (Male DC Connector piece required) <p>Notes about DC connection: - DC cable cross section: depends on the respective configuration. BYD does not specify a necessary cable cross-section herePlease pay attention to the power and current of the battery and the inverter, as well as the local rules.</p>
3	Latest Firmware	Always update the newest Firmware! (with using the latest App Version) Note: If not stated otherwise, wifi password is BYDB-Box
4	App Configuration	To complete the commissioning, the configuration of the battery via "Be Connect" App or PC tool "Be Connect Plus" (BCP) is mandatory! Please restart battery afterwards.
5	Proper Restart	<p>Switch off:</p> <ol style="list-style-type: none"> 1. Press BMU LED Button for 5 seconds. All modules should be off then. Make sure all LEDs of the battery are completely off. Note: if the modules do not turn off then, something is wrong in the PDU<>BMU connection. Replace comm cable and try again. <p>Switch on (mind the sequence!)</p> <ol style="list-style-type: none"> 1. Switch on the fuse between Inverter and Battery (if there is any) 2. Switch on the Battery (press LED Button on the topmost module for 3 seconds. All modules should become active then) 3. Turn on the inverter
6	Checking the correct operation	<p>The system runs properly if:</p> <ul style="list-style-type: none"> - Inverter displays battery SOC correctly - System charges / discharges <p>Note: If you can not complete the commissioning, then turn off the battery before you leave the site and make sure all LEDs are off to avoid a discharge of the battery.</p>

2. ERROR ANALYSIS

Please refer to the general steps before proceeding, see chapter 1.

2.1 BMU does not turn on / BMU LED is off or flickering abnormally

LEDs of BMU do not light up, although the battery is ON.

No.	Name	Description
7	Check correct cable port	Make sure that the correct data cable port has been used at the BMU ("BMS" port. Do not mix with "inverter" or "Ethernet" port).
8	Replace Comm Cable	Try a completely new communication cable between battery and BMU. Note: Sometimes it might be necessary to unplug the communication cable and plug it again while batteries are switched on.
9	Voltage measurement on pin 7&8	Measure the voltage of PIN 7 & 8 while the other side of the cable is connected to the IN port of the Battery-Box and while the Battery-Box is powered on. Voltage should be around 50V. If yes: try another BMU (if available). If no: check another cable or try another LVS Lite if multiple batteries are installed in the system. 
10	Only LED faulty?	In some rare cases, the LED of the BMU is faulty. To check that: check if there is a WIFI access point of the Battery-Box and check if there are internal LEDs inside the BMU. If so, only the external LED is inactive and a commissioning could still work.
11	Voltage measurement	Check voltage of battery. See Section 2.10
12	Module Exclusion Method	Check if system works when removing the suspected module. See section 2.11
13	BMU exchange	If problem remains: Test another BMU, if available.

2.2 Modules do not show any reaction / No LED on module

LEDs of some module do not light up, although button on topmost module is pressed for 3 seconds..

No.	Name	Description
14	Swap module position	Note: If top modules have active LED but bottom modules don't, it indicates a connection issue between modules. Example: <i>LVS Lite16.0 (4 modules). Module 1&2 have LED, module 3&4 don't have LED. Issue is in the connection between module 2 &3. Problem likely to be module 2 (less likely: module 3).</i> - Remove the affected module and check whether problem disappears. If not, check the module below. - Rearrange the modules in the tower. Note: The affected module often works without restrictions at the lowest module position of the tower.

15	Only LED faulty?	In some rare cases, the LED of the module is faulty. To check that: use PC Tool BCP and check under "diagnosis" if all modules ("BMS") are detected correctly.
16	Voltage measurement	Check voltage of battery. See Section 2.10
17	Module Exclusion Method	- Module Exclusion Method (see section 2.11): Check if the system works when removing the suspected module

2.3 Problem with the Firmware Update / App Configuration / Battery WiFi

The Battery Management consists of two components: the BMU and the BMS. The Firmware Update from the App will update the BMU, which will then update the BMS. **The BMS update can take up to 30 Minutes.**

No.	Name	Description
18	Correct App and Firmware	<p>Make sure to have the latest App version (>2.1.0) and Battery Firmware (download inside the App) on your mobile device before connecting the app with battery WiFi.</p> <p>If the App cannot be installed, or other general Problems occur with the App:</p> <ul style="list-style-type: none"> - Try with a different mobile device (For Android: min Android version requirement is 4.4.) - Try with PC Tool BCP (section 2.9) - Note: If the WiFi connection is not stable you might remove the lan cable during the configuration. Once the battery has been configured correctly you can connect it again to the Internet.
19	WiFi cannot be found / WiFi unstable	<p>The Battery WiFi turns off 5 hours after the start of the Battery. To reactivate the WiFi, press the LED button of the BMU about 1 second or restart the system. To reset the WiFi, press the LED button of the BMU three times 1 second within 6 seconds.</p> <p>If problem remains:</p> <ul style="list-style-type: none"> - remove the lan cable during the configuration. Once the Battery has been configured correctly you can connect it again to the Internet. - check whether other mobile devices are connected the same wifi - try another mobile device
20	Proper restart	Note: Whenever the configuration via Be Connect app / Be Connect Plus tool is changed, a restart of the battery is necessary to make sure that all changes come into effect (see step 5 in section 1)
21	Close and restart the App	If the App does not react anymore after some minutes loading during the update process, close (close the program completely) and restart the App. Or try with PC Tool BCP (section 2.9)
22	BMS Version not updated	<p>The App updates the BMU which updates the BMS,. This can take up to 30 min..</p> <p>If the BMS Version is not updated after 30min with stable inverter communication, follow the below Process:</p> <ol style="list-style-type: none"> 1. Update Firmware through the App again 2. Restart the system <ol style="list-style-type: none"> a. Switch off the Inverter first, then switch off the battery second (Press the LED of the BMU for 5 seconds) b. Wait for 2 Minutes c. Turn on the Battery first, then turn on the inverter second 3. Wait for 30 Minutes 4. Check BMS Firmware Version again with App. If Version is still wrong, please do the update process again (if possible with another mobile device). 5. Note: if Voltage of Battery is not shown in Be Connect, the update will not be transferred to BMS. Make sure the BMU recognizes BMS properly.

2.4 Incorrect output voltage / No BMS Data / BMU EC102

Wrong PDU output voltage (e.g 16V) is normally an indicator for incorrect configuration or BMU<>BMS communication issue

No.	Name	Description
23	Battery correctly configured?	<p>Please check if the App configuration was successful and the Firmware is the most recent one. If there are problems, please refer to Section 2.3</p> <p>Note: It is important to select the correct module quantity. Else, the PDU output voltage will be wrong! The quantity you need to select refers to the overall quantity of LVS Lite 4.0 modules and not to the quantity of towers.</p> <p>Note: Don't forget to properly restart system after changing configuration!</p>
24	Proper restart	<p>Note: Whenever the configuration via Be Connect app / Be Connect Plus tool is changed, a restart of the battery is necessary to make sure that all changes come into effect. Make sure to follow the correct switch on procedure (see step 5 in section 1)</p>
25	BMU<>BMS communication	<p>make sure that the comm cable is connected to the right port of BMU (the one labeled as "BMS"). Replace comm cable between BMU and battery.</p>
26	Check terminal resistor	<p>Make sure that the terminal resistor is connected to the OUT port (Terminal resistor properties: 120 Ω resistor between pin 5 and 6)</p> <p>If it was connected already, then please remove it and try without it to rule out a faulty terminal resistor. Don't forget to properly restart system afterwards.</p>
27	Check Base unit	<p>Issue could be caused by faulty base unit: remove base unit from the tower. That means: place the bottom module to the ground directly, without any base. Don't forget to restart battery. If it works then, the base unit is the root cause then and needs replacing</p>
28	Module Exclusion Method	<p>Remove all modules from the tower except one. Restart system with that single module. Don't forget to set new module number in the app / BCP tool (another restart will be necessary afterwards). Repeat that for every of the other modules (first only module A; later only module B et) to identify a potentially faulty module.</p> <p>Very important: don't forget to reconfigure and to restart always when changing the configuration!</p>
29	Further checking	<p>If problem remains:</p> <ul style="list-style-type: none"> - Download all data with BCP (section 2.9) - Check the inverter - Test another BMU, if available - Test another PDU, if available

2.5 Communication issue with Inverter / BMU EC106

PDU output voltage is normal and you can see BMS (cell) data in BCP, but inverter does not detect battery.

Note: if PDU output voltage is incorrect (eg 16V) or BMS (cell) data cannot be seen in BCP, then go through **section 2.4** first

No.	Name	Description
30	Configuration	Check if the configuration is correct. Refer to latest "BYD Battery-Box Premium LVS Lite Minimum Configuration List" (V1.0 or above) available at: www.bydbatterybox.com Make sure the inverter is configured and working correctly.
31	Output voltage incorrect? No BMS Data?	Check according to section 2.4 . Especially make sure to configure battery via app and to properly restart afterwards.
32	Inverter settings	Make sure to configure the battery correctly on the inverter interface. Refer to inverter manual for details.
33	Replace comm cable	Replace the communication cable (min. CAT5!). Confirm PIN cable configuration for the specific inverter model (see manual)
34	Further checking	If problem remains: - Test another BMU, if available

2.6 SOC & charging logic

No	Name	Description
35	SOC jumps	The SOC of an LFP battery cannot be measured. It is a calculated value. In general, the state of charge (SOC) of a battery is calculated using the voltage, but other factors such as temperature, current flow and charging behavior also play a role. The calculation of the state of charge is generally more precise if the battery regularly sees full cycles. Every now and then an SOC correction / calibration might occur. That is normal.

2.7 Unexpected shutdown

System has been successfully commissioned in the past and did run for some time. Later on an unexpected shutdown occurred.

No	Name	Description
36	Inverter Communication	The battery only works with an compatible external inverter. If for whatever reason the communication between battery and inverter is lost, the battery will shut down itself within 30minutes. Therefore, check which one did shut down first (battery or inverter) and check if inverter is properly detecting battery (e.g showing correct SOC or temperature). If problem remains, check according to section 2.5 .
37	Battery Logs / History Data	Sporadic alarms are hard to detect as they only occur sometimes. Therefore, it is very important to download and provide all the historic battery log files in order to identify the root cause. See section 2.9 for details.
38	Inverter Warning & Monitoring	Unexpected Shutdown can be caused by overall system settings. Therefore, it is necessary to evaluate inverter data as well. <ul style="list-style-type: none">- Which error message are shown in inverter- Please provide access to Inverter portal

2.8 BMU/BMS LED Event Code (EC)

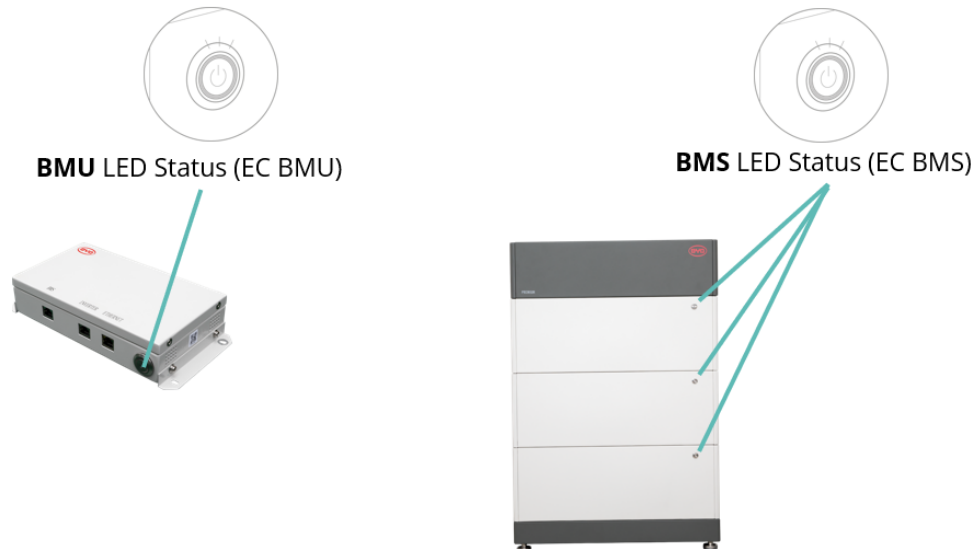
A constant white LED refers to standby mode. White blinking means charge or discharge.

When the battery is initiating, the LED will flash white and blue with an interval time of 0.5 seconds (normal during startup).

When the LED flashes blue with an interval time of 1 second it indicates an event code. Please start to count when the white LED begins to flash, then count how many times the white and blue LED flashes. (also refer to the manual!)

Example: 1xwhite, 6xblue → EC 106 / 1xwhite, 11xblue → EC 111 / 3xwhite, 3xblue → EC 303

Note: every LVS Lite Module has its own BMS. The Event Code of the BMS will therefore be shown in the LED of the module.



Most errors are caused by a faulty communication line, an incorrect app configuration or the missing restart after the app-configuration. Please go in detail through: **Section 2.3 & 2.4**

Note: if the system is not correctly configured with the app, the event code (EC) might be misleading.

EC BMU	EC BMS	Measure
No LED	/	See section 2.1 .
/	No LED	See section 2.2 .
Abnormal LED flickering	/	See section 2.1 Module Exclusion Method (see section 2.11): Check if the system works when removing the suspected module
EC 101	/	Initialisation Failure. - Make sure the app-configuration has been completed correctly (especially module quantity!) - Restart the system properly (see step 5 in section 1) If the problem remains: - Download all data with BCP (especially the historical data) (section 2.9) - replace BMU, if available

EC 102	/	Incorrect module quantity / Module not detected.
EC 105		<ul style="list-style-type: none"> - See section 2.4. - Make sure the app-configuration has been completed correctly (especially module quantity!). - Check the terminal resistor. The terminal resistor (120 Ω at pin 5+6) is responsible for a clean communication between BMS and BMU. In rare cases it can be damaged and can disturb the signal. In these rare cases it is recommended to remove the terminal resistor. - replace communication cable between Battery and BMU - Restart the system properly (see step 5 in section 1) - Module Exclusion Method (see section 2.11): Check if the system works when removing the suspected module <p>If problem remains:</p> <ul style="list-style-type: none"> - Download all data with BCP (especially the historical data) (section 2.9) - replace BMU, if available
EC 103	EC 108	<p>PreCharge Fault.</p> <ul style="list-style-type: none"> - Check the DC cabling and make sure that the Minimum Configuration is met. - Check the voltage of the batteries with BCP according to section 2.9 - Restart the system properly (see step 5 in section 1) - Module Exclusion Method (see section 2.11): Check if the system works when removing the suspected module <p>If problem remains:</p> <ul style="list-style-type: none"> - Download all data with BCP (especially the historical and the cell data) (section 2.9) - provide the serialnumber and voltage of the faulty module (see checklist on last page)
EC 104	EC 101	<p>Short circuit / DC reverse connection.</p> <ul style="list-style-type: none"> - Check DC cabling (is there any short circuit? Is the fuse between battery and inverter closed?) - Disconnect the battery system from the inverter and restart the battery system alone (battery isolated), to evaluate if the error is being caused externally (i.e. short circuit in inverter or MPPT). If the Event Code remains, the error might be in the battery. If the Event Code has changed, there might be an error in the inverter side. - Module Exclusion Method (see section 2.11): Check if the system works when removing the suspected module <p>If problem remains:</p> <ul style="list-style-type: none"> - Download all data with BCP (especially the historical and the cell data) (section 2.9) - provide the serialnumber and voltage of the faulty module (see checklist on last page)
EC 104	EC 102 up to EC113 (All other than 101)	<p>One of the BMS (modules) reports an event message.</p> <ul style="list-style-type: none"> - Check the voltage of the batteries according to section 2.10 <p>If problem remains:</p> <ul style="list-style-type: none"> - Download all data with BCP (especially the historical and the cell data) (section 2.9) - provide the serialnumber and voltage of the faulty module (see checklist on last page)
EC 106	/	<p>No communication with Inverter.</p> <ul style="list-style-type: none"> - Make sure the inverter is on, configured and working correctly. - Check according to section 2.5

2.9 Be Connect Plus (BCP)

Be Connect Plus is a Windows-PC tool. With Be Connect Plus (BCP) you can:

- read the battery information,
- configure the battery system
- update BMU & BMS firmware
- Export / download battery logs (From BMU and all BMS)

BCP is constantly being improved and updated. **Make sure to use the latest program version. You can download the latest version of the Tool on www.bydbatterybox.com / www.alppower.com.au.**

For the service analysis, please download and provide the data / logs as described in the program instructions (see PDF manual inside of program ZIP archive).

Note: You need a computer with Windows that will be connected to the battery Wifi.
Login as Installer to Be Connect Plus, the password is the same as for WiFi: BYDB-Box

Be Connect Plus_V1.5.0

Login File

Disconnect Battery Type: LVS/LVS L Inverter: SolarEdge LV Serial number P011T030Z BATTERY BOX

System Info Overview

Bat: 52.30V Refresh

System status: Normal

Inverter

Charging

Output: 52.20V

Current: 19.8A

Power: 1033.56W

SOC: 20%

F/W Version
BMU: V1.20-A
BMS: V1.8-A
BMS Qty: 4

Cells Info
V-Max: 3.27V
V-Min: 3.25V
T-Max: 25°C
T-Min: 22°C

Others
Phase: Three
Grid: ON GRID
P-T: V0.9

Configuration
Inverter Type: SolarEdge LV Phase: Three
Battery Type: LVS/LVS Lite Grid: On Grid
Modules Parallel: 4 Setup

2021-06-30 13:39:44 Copyright © 2020 BYD Company All rights reserved

2.10 Voltage measurement and undervoltage

You can see the voltages (cells and module) in the app or BCP Tool (**section 2.9**). Alternatively you can measure the module voltage manually according to the description below. Make sure not to create a short circuit!

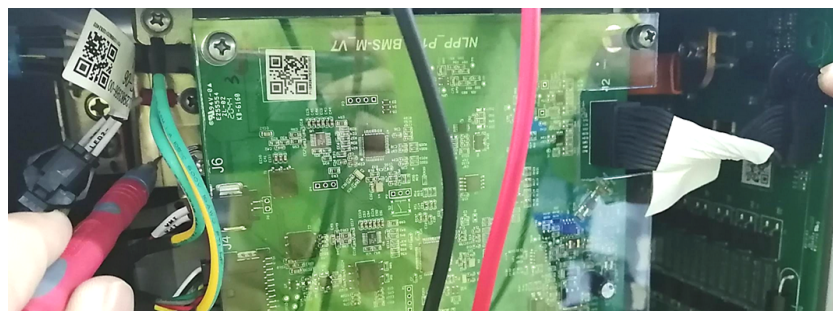
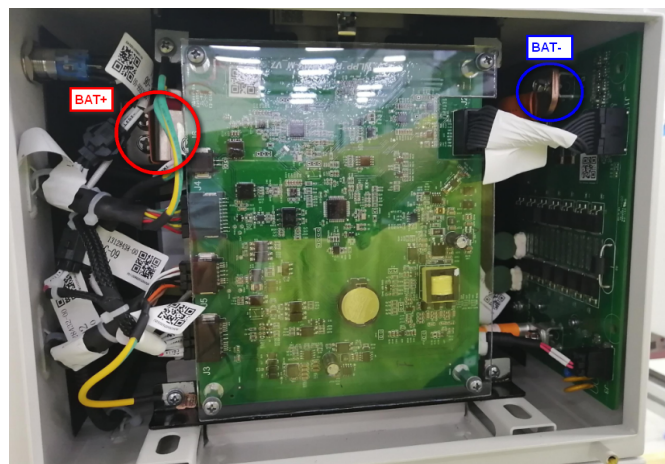
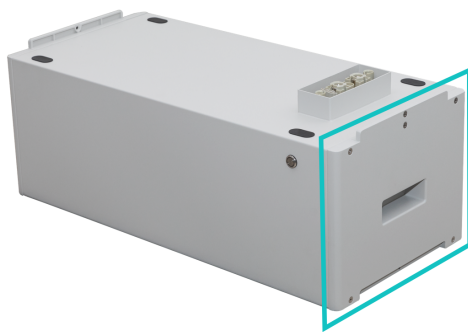
To check the voltage on the PDU, the Modules have to be ON and the BMU has to be connected with the PDU! (LEDs on Modules and BMU have to be ON). Please measure at **P+** and **P-** according to the picture below:



The voltage measured on the PDU is the average voltage of all modules in the tower and should be around 50V.

NOTE: the PDU output voltage will only be correct if the battery has been configured correctly via app and then restarted. Without correct app configuration, the PDU output voltage will be wrong!

If the PDU output voltage is too low despite correct configuration, please measure the voltage of each LVS Lite module individually. To do this, remove the right side panel of the battery module (the side with the LED). Measure the voltage at the points marked "BAT +" and "BAT-" below. The voltage should be about 50 V. Attention: Be careful not to cause a short circuit!



Undervoltage

A Module in which one of the 16 cells has a voltage of <1.5 V is in undervoltage (check with BCP (**section 2.9**) / BC if possible).

- LVS Lite Modules with >45 V should be fine and you can go on to check other points according to this service guideline.
- If the module voltage is <40V but the single cell voltage is >1.5V, the battery needs to be charged quickly while avoiding any further discharge. Therefore, shut down the system and search for the problem according to the guideline, while the battery is completely switched off. Also check on the inverter side why the force charge doesn't work. Do not turn on the battery before making sure the inverter is able to charge the battery.
- If only one module is in undervoltage: remove that module and try commissioning without it (if the remaining modules still comply with the Minimum Configuration List). Otherwise, make sure to avoid further overdischarge. (Turn off the system completely)
- If one, or all modules are in undervoltage: Contact the service as stated below and make sure to avoid any further discharge of the battery (Turn off the system completely)

When contacting the service, make sure to fill the service checklist completely and add the following information:

- Serial Numbers (of the BMU and all affected modules)
- Individual module voltages of all modules (related to Serialnumber)
- If possible: Logs from the battery using BCP (**section 2.9**) and Screenshots showing the cell voltages
- Initial Firmware (FW) Version of the Battery when the UV happened (BMU and BMS)
- Detailed description how and why the system reached Undervoltage if known. Information when the system was installed and commissioned and in which circumstance and when the undervoltage happened. If the battery was never running before: Why did it never work before, and what was the battery status when the battery was left (on / off / LED).
- Inverter Model, Serial Number and Inverter Logs
- Access to Inverter portal

2.11 Module Exclusion Method (Identifying a faulty module)

- Normally a faulty module can be identified with the Be Connect Plus Program or by the LED Code in the Battery Module. In this case, remove the Module with the Event Code from the system, and commission the remaining system (if it still complies with the minimum configuration list) and check if it runs properly. If the problem remains, please also check the module above the one with the Event Code.
- Otherwise, try the LVS Lite Modules one by one, or by adding Modules one by one into the tower and always check if the system can work properly to identify a possibly faulty module.

Important: The module quantity must be adjusted in the app whenever the number of modules has been changed! Don't forget to perform a proper restart after a new configuration!

1. Switch off the battery (Press button on BMU for 5 seconds until all batteries switch off. Note: if the modules do not turn off then, something is wrong in the PDU<>BMU connection. Replace comm cable and try again.)
2. Turn on the Battery (button on topmost battery)

3. SERVICE TASKS

Please go through the general steps beforehand, see chapter 1.

3.1 BMU Replacement

Have you detected a faulty BMU?:

After replacing the BMU, please do not forget to re-do the configuration and firmware-update with the app or BCP.

3.2 PDU Replacement

After replacing the PDU, please do not forget to re-do the configuration and firmware-update with the app or BCP.

3.3 LVS Lite Module Replacement

After replacing the module, please do not forget to re-do the configuration and firmware-update with the app or BCP.

BYD Battery-Box Premium LVS Lite Service Checklist - V1.1 EN

Important: The installation and all other kinds of works or measurements in combination with the BYD Battery-Box are only allowed by professional and qualified electricians. Improper handling can cause danger and damage. This document does not replace the official BYD manuals and documents. No responsibility is accepted for the accuracy of the information.

1. GENERAL STEPS

Please carefully check **all** „General Steps“ from page 3 of the Service Guideline and confirm this in the boxes below

- | | |
|------------------------------|-----------------------|
| 1.1 Configuration | 1.4 App Configuration |
| 1.2 Correct external cabling | 1.5 Proper Restart |
| 1.3 Latest Firmware | 1.6 Correct Operation |

2. ERROR RELATED ANALYSIS

Please mark the **error related** Analysis from Chapter 2 of the Service Guideline that you checked, and collect all the information related to those Sections

- | | | |
|--|---|--|
| 2.1 BMU does not turn on / LED is off or flickering abnormally | 2.5 Communication issue with Inverter / BMU EC106 | 2.9 Be Connect Plus (BCP) |
| 2.2 Modules do not show any reaction / No LED on module | 2.6 SOC & charging logic | 2.10 Voltage measurement and undervoltage |
| 2.3 Problem with the FW Update / App Configuration / WiFi | 2.7 Unexpected shutdown | 2.11 Identifying a faulty module / Module Exclusion Method |
| 2.4 Incorrect output voltage / No BMS Data / BMU EC102 | 2.8 BMU/BMS LED Event Code (EC) | |

3. SERVICE INFORMATION

Please fill all available information in below table. Some information like the Serial Number of the BCU is mandatory to receive service.

• Service Ticket Number or System ID:

• Installer / Delivery Address / Contact:

Company	ZIP / City
Contact Person	Phone
Street / Nr.	Email

• System Information

Battery Configuration (e.g. LVS Lite 12.0 /...))	BMU Firmware		
BMU Serial Number	BMS Firmware		
BMU Connected to Internet	Yes	No	Inverter Firmware
Inverter Brand + Model	System Name on Inverter Portal		
Inverter Serial Number			
Commissioning Date			

• Service Information

BMU EventCode (EC)	Inverter Error Code	
BMS EventCode(s) and related Module Serial Number(s)		
Was the battery charging / discharging before (was the system working normally before?)	Yes	No
Get Data of the Battery-Box with the Be Connect Plus (BCP) Programm (see chapter 2.9)		

Description of the Problem

Please provide any additional information that is necessary or could help in the analysis of the service case (e.g. serial number of a wrong module, video of a special behaviour; pictures; app screenshots; module voltages...)

By contacting us you confirm, that a qualified person has done the necessary control and collected all available information above.

Service Contact: Alps Power Pty Ltd
www.alpspower.com.au
service@alpspower.com.au
+61 02 8005 6688